

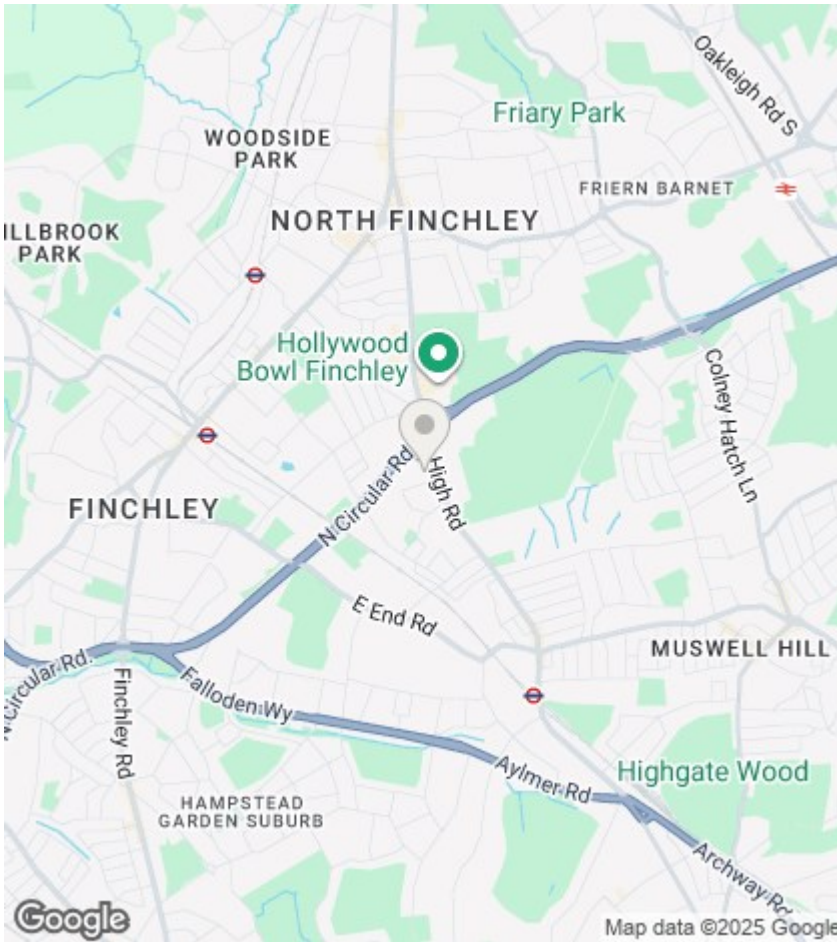
est 1979



## 11 Tarling Road, London, N2 8LB

£575,000

- Chain-free
- 3 Bedrooms
- EPC Rating C
- Private Garden
- 0.9 miles to tube (Northern Line, Zone 3)
- Terraced House
- Cul-de-sac Location
- Downstairs Guest W/C



## Directions

## Viewings

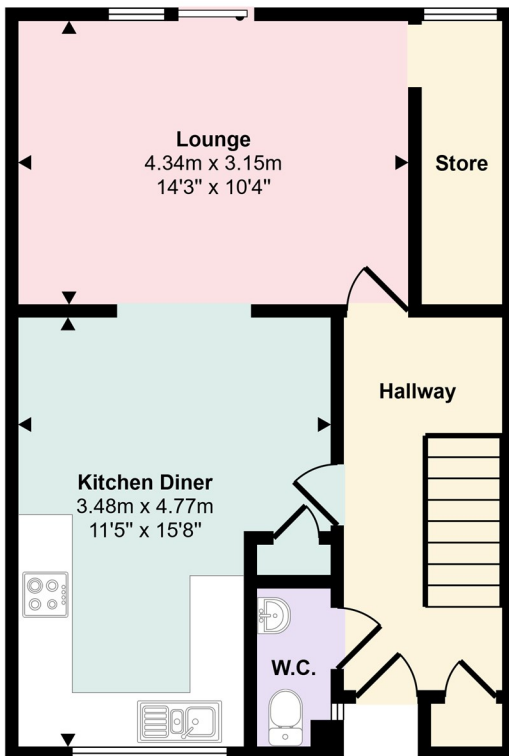
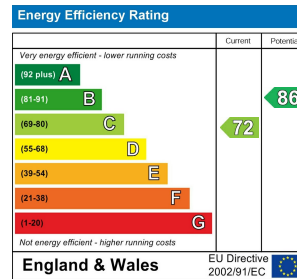
Viewings by arrangement only. Call 020 8444 5222 to make an appointment.

## Council Tax Band:

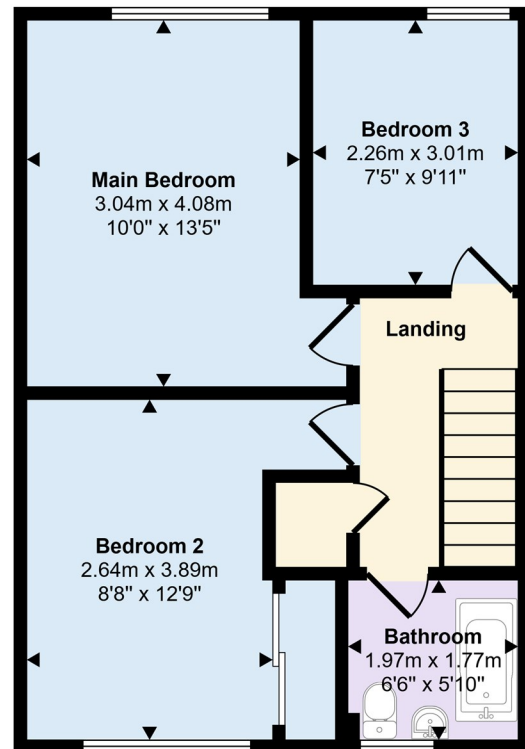
D

## EPC Rating:

C



Ground Floor  
Approx 43 sq m / 461 sq ft



First Floor  
Approx 44 sq m / 475 sq ft